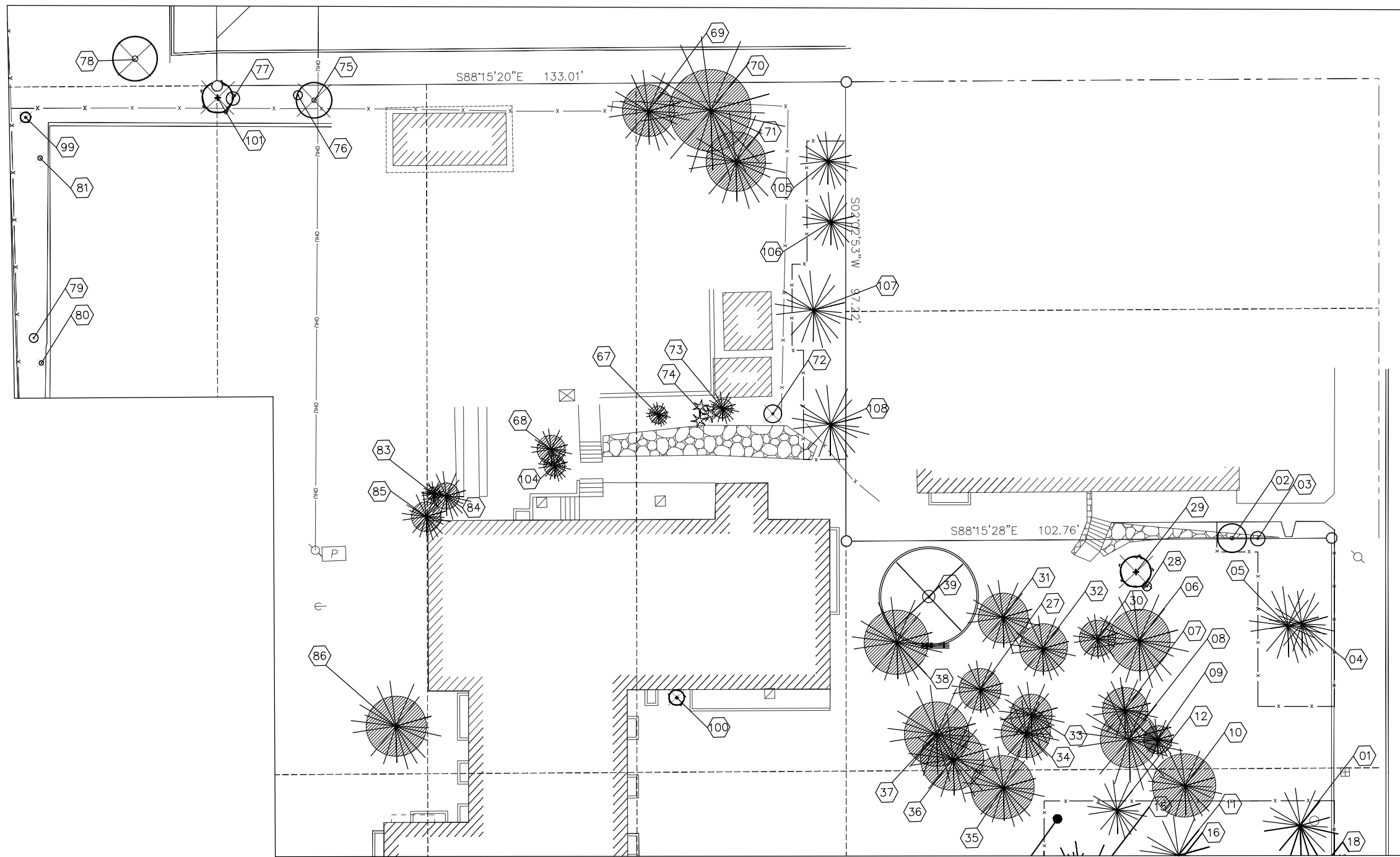


TREE TABLE					
No.	Caliper (in.)	Species	Exist Canopy (SF)	Trees Retained (Tag # OR T)	Retained Trees Canopy (SF)
01	22	Douglas Fir	16	01	16
02**	6	Madrona	6	02	6
03	4	Madrona	3	03	3
04	32	Douglas Fir	14	04	14
05	22	Douglas Fir	16	05	16
06	24	Douglas Fir	24		
07	16	Hemlock	16		
08	26	Douglas Fir	26		
09	10	Douglas Fir	10		
10	18	Hemlock	18		
11	28	Douglas Fir	16	11	16
12	18	Douglas Fir	12	12	12
13	0	Dead Snag	0	13	0
14	10	Douglas Fir	8	14	8
15	20	Douglas Fir	22	15	22
16	12	Douglas Fir	14	16	14
17	26	Douglas Fir	20	17	20
18	28	Douglas Fir	18	18	18
19	12	Douglas Fir	20	19	20
20	22	Douglas Fir	18	20	18
21	26	Douglas Fir	20	21	20
22	18	Douglas Fir	15	22	15
23	22	Douglas Fir	12	23	12
24	18	Douglas Fir	10	24	10
25	12	Douglas Fir	9	25	9
26	18	Douglas Fir	15	26	15
27	14	Douglas Fir	14		
28	2	Holly	2		
29	6	Holly Mt*	6		
30	12	Douglas Fir	12		
31	18	Hemlock	18		
32	16	Douglas Fir	16		
33	16	Douglas Fir	16		
34	16	Douglas Fir	16		
35	20	Douglas Fir	20		
36	22	Hemlock	22		
37	24	Douglas Fir	24		
38	22	Douglas Fir	22		
39	22	Cherry	22		
40	40	Douglas Fir	22	40	22
41**	30	Douglas Fir	27	41	27
42	16	Douglas Fir	12	42	12
43	32	Cedar	24	43	24
44	24	Douglas Fir	18	44	18
45	12	Douglas Fir	22	45	22
46	14	Douglas Fir	12	46	12
47	22	Douglas Fir	20	47	20
48	3	Deciduous Mt*	5	48	5
49	18	Douglas Fir	18	49	18
50	24	Douglas Fir	24		
51	16	Deciduous	16		
52	24	Douglas Fir	24		
53	26	Douglas Fir	26		
54	26	Douglas Fir	26		
55	4	Deciduous Mt*	4		
56	4	Douglas Fir	4	T	4
57	2	Douglas Fir	2		
58	4	Douglas Fir	4	T	4
59	2	Douglas Fir	2	T	2
60	2	Douglas Fir	2	T	2
61	2	Douglas Fir	2		
62**	6	Dogwood sp.	10	62/T	10
63	4	Deciduous Mt*	4		
64	4	Deciduous	4		
65	3	Douglas Fir	3		
66	24	Pine	24		
67	6	Cedar	6		
68	10	Pine	10		
69	20	Hemlock	20		
70**	36	Douglas Fir	36		
71	24	Douglas Fir	24		
72	4	Ash	4		
73	8	Pine	8		
74	8	Pine Mt*	8		
75	8	Holly	8		
76	2	Holly	2		
77	3	Holly	3		
78	10	Holly	10		
79	2	Holly	2		
80	1	Holly	1		
81	1	Holly	1		
82	2	Birch	2		
83	6	Pine	6		
84	12	Pine	12		
85	12	Pine	12		
86	22	Douglas Fir	22		
87	18	Birch	18		
88	16	Birch	16		
89	16	Birch	16		
90	1	Deciduous Mt*	1		
91	14	Red Pine	14		
92	8	Prunus sp.	8		
93	4	Arboretum	4		
94	8	Pine	8		
95	8	Arboretum	8		
96	6	Arboretum	6		
97	1	Prunus sp.	1		
98	8	Red Maple	8		
99	2	Holly Mt*	2		
100	3	Holly Mt*	3		
101	6	Holly Mt*	6		
102	6	Holly Mt*	6		
103	12	Laurel	12		
104	8	Spruce	8		
105	12	Pine	12	105	12
106	12	Pine	12	106	12
107	16	Pine	16	107	16
108	18	Pine	18	108	18
			1349	40	544



MATCHLINE SEE SHEET L 1.2

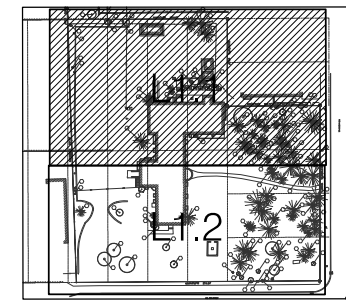
PROPOSED NEW TREES TO BE INSTALLED				
QTY	Species	Canopy (SF)**	Total Canopy (SF)	
16	Acer truncatum X Wiermanni	25	400	
9	Red Pacific Sunset*	40	360	
15	Cornus nutans 'Colligo Giant'	25	375	
40			1135	
TOTAL TREE CANOPY (PRESERVED, TRANSPLANTED AND PROPOSED)				
		Total Tree Count	Total Canopy (SF)	
	Retained Trees	40	544	
	Proposed Trees	40	1135	
		80	1679	
LEGEND				
T = Existing tree to be transplanted elsewhere on site				
* Multi Trunk				
** Noted as Exceptional Tree per DR6-2001 (Robert Williams)				
*** Mature Canopy Data obtained from SDOF & Oregon State University Dept of Horticulture				

LEGEND

- EXISTING MULTI-TRUNK EVERGREEN TREES TO BE REMOVED
- EXISTING MULTI-TRUNK DECIDUOUS TREES TO BE REMOVED
- EXISTING MULTI-TRUNK DECIDUOUS TREES TO REMAIN
- EXISTING EVERGREEN TREE TO BE REMOVED
- EXISTING EVERGREEN TO REMAIN
- EXISTING EVERGREEN TO BE TRANSPLANTED ON SITE
- EXISTING DECIDUOUS TREE TO BE REMOVED
- EXISTING DECIDUOUS TREE TO REMAIN
- EXISTING DECIDUOUS TREE TO BE TRANSPLANTED ON SITE
- TREE PROTECTION FENCE

NOTES

- CONTRACTOR TO PROVIDE EROSION CONTROL FENCING AT LIMIT OF WORK LINE AND COVER EXPOSED SLOPES & SOILS WITH ORGANIC MULCH IN ACCORDANCE WITH DPD-22.802.015 & 22.802.216 BMP GUIDELINES.
- TREE TABLE SEE SHEET L 1.1.



KEY PLAN (NTS)



FOR COORDINATION ONLY NOT FOR CONSTRUCTION



ONE YESLER WAY # 200 SEATTLE WA 98104  
TEL: 206.556.1970 FAX: 206.556.1971



The Berger Partnership PS  
Landscape Architecture

1721 8th Avenue N  
Seattle, WA 98109  
v 206.325.6877  
f 206.323.6867

bergerpartnership.com

MAPLE LEAF HOUSING  
8511 15TH AVE NE  
SEATTLE, WA 98116

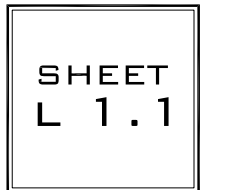
TREE PROTECTION PLAN & TABLE (NORTH)

SUBMITTAL/REVISIONS:

DRB SUBMITTAL 3/03/08  
DRB Revision 03/13/08

DATE: 02.28.08  
SCALE: 1" = 10'-0"  
DRAWN: JSD/HT  
JOB #: 3000480  
BIP #:

© 2007 Runberg Architecture Group, PLLC. Runberg Architecture Group, PLLC is a registered professional corporation under the laws of the State of Washington. All rights reserved. No part of this document may be reproduced without the written consent of Runberg Architecture Group, PLLC.





ONE YESLER WAY # 200 SEATTLE, WA 98104  
TEL: 206.356.1970 FAX: 206.356.1971



The Berger Partnership PS  
Landscape Architecture

1721 8th Avenue N  
Seattle, WA 98109  
v 206.325.6877  
f 206.323.6867

bergerpartnership.com

MAPLE LEAF HOUSING  
8511 15TH AVE NE  
SEATTLE, WA 98116

TREE PROTECTION PLAN  
[SOUTH]

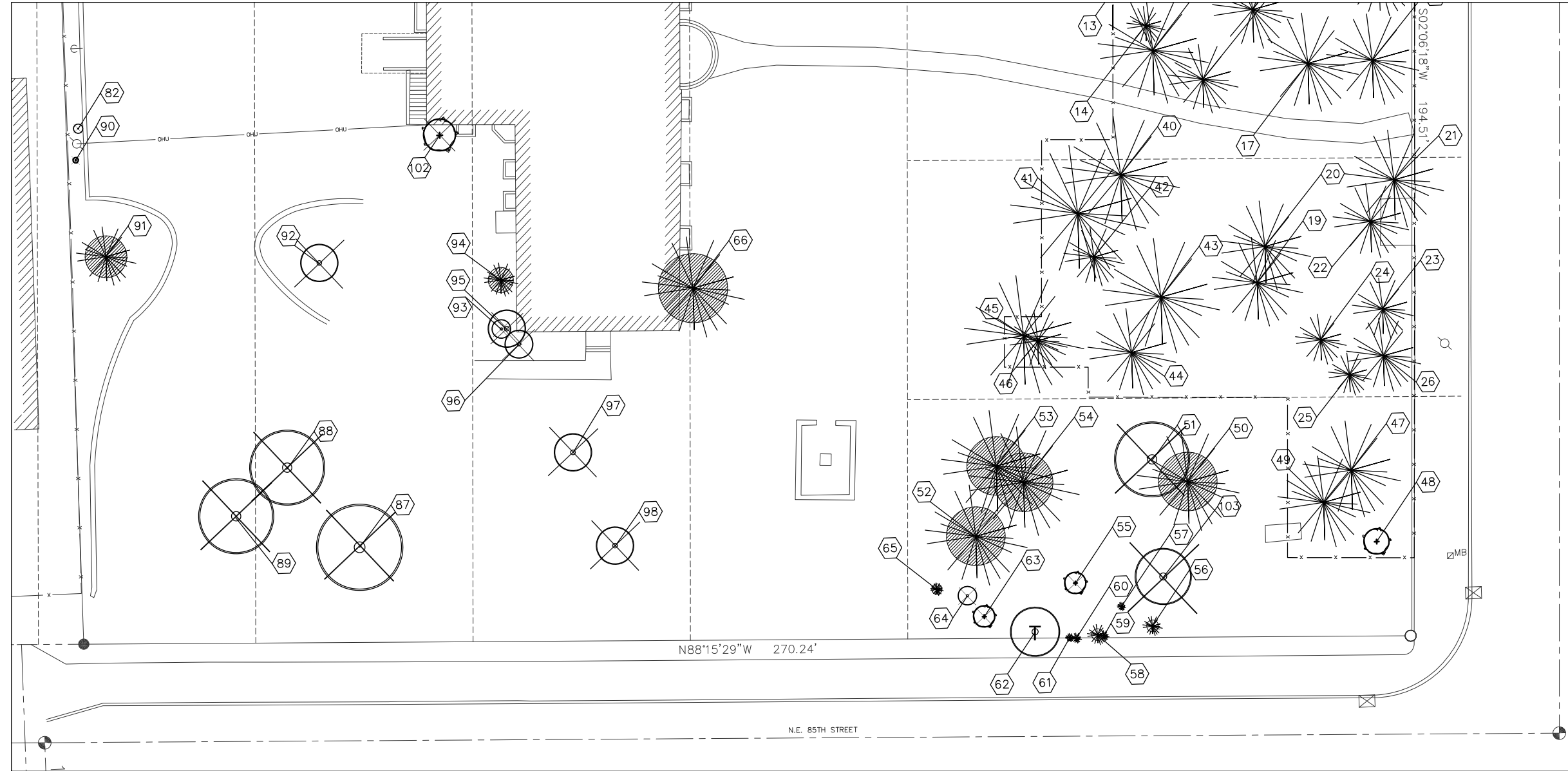
SUBMITTAL/REVISIONS:  
DRB SUBMITTAL 3/03/08  
DRB Revision 03/13/08

DATE: 02.28.08  
SCALE: 1" = 10'-0"  
DRAWN: JS/SH  
JOB #: 3000480  
MUP #: 3000480  
BP #:

© 2007 Runberg Architecture Group, PLLC. Runberg Architecture Group, PLLC is a registered professional corporation under the laws of the State of Washington. All rights reserved. This drawing is the property of Runberg Architecture Group, PLLC. No part of this drawing may be reproduced or transmitted in any form or by any means, electronic or mechanical, including photocopying, recording, or by any information storage and retrieval system, without the prior written permission of Runberg Architecture Group, PLLC.

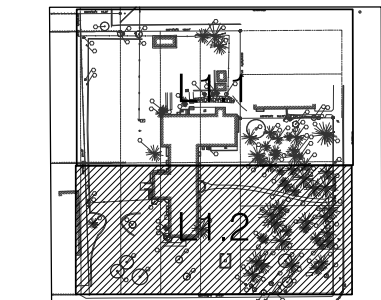
SHEET  
L 1.2

MATCHLINE SEE SHEET L 1.1



N.E. 85TH STREET

N88°15'29"W 270.24'



KEY PLAN (NTS)



FOR COORDINATION ONLY  
NOT FOR CONSTRUCTION

NOTES

1. CONTRACTOR TO PROVIDE EROSION CONTROL FENCING AT LIMIT OF WORK LINE AND COVER EXPOSED SLOPES & SOILS WITH ORGANIC MULCH IN ACCORDANCE WITH DPD 22.802.015 & 22.802.016 BMP GUIDELINES.
2. TREE TABLE SEE SHEET L 1.1.

LEGEND

- EXISTING MULTI-TRUNK EVERGREEN TREES TO BE REMOVED
- EXISTING MULTI-TRUNK DECIDUOUS TREES TO BE REMOVED
- EXISTING MULTI-TRUNK DECIDUOUS TREES TO REMAIN
- EXISTING EVERGREEN TREE TO BE REMOVED
- EXISTING EVERGREEN TO REMAIN
- EXISTING EVERGREEN TO BE TRANSPLANTED ON SITE
- EXISTING DECIDUOUS TREE TO BE REMOVED
- EXISTING DECIDUOUS TREE TO REMAIN
- EXISTING DECIDUOUS TREE TO BE TRANSPLANTED ON SITE
- TREE PROTECTION FENCE